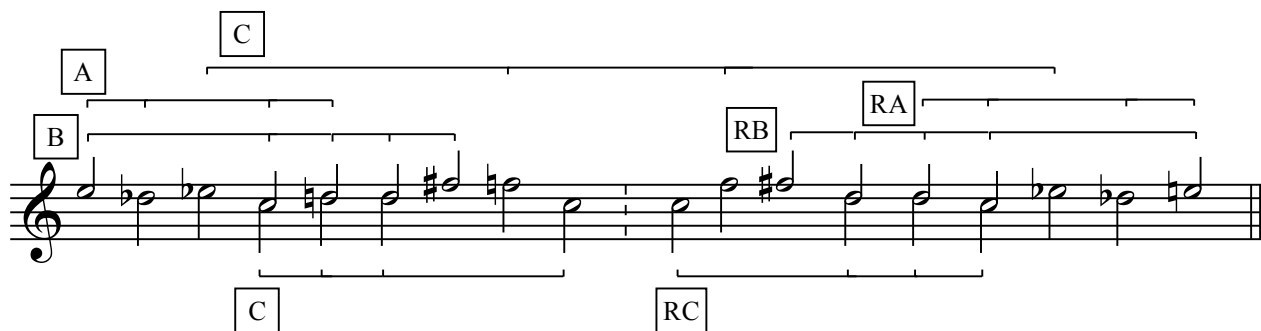
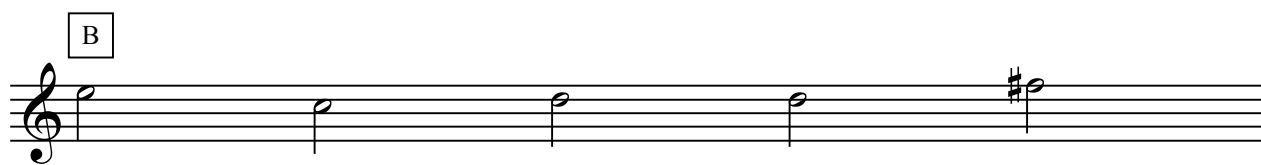


Giovanni Grosskopf

Ritus

per flauto, violino, clarinetto (anche clarinetto basso), chitarra e pianoforte
for flute, violin, clarinet (also bass clarinet), guitar and piano

MOTTO



Introitus et Declamatio

1 $\bullet = 92$

Flute

Clarinet in B \flat

Guitar

Piano

Violin

mf

pp \triangleleft *mf*

pp \triangleleft \triangleleft

pp \triangleleft \triangleleft

5

Fl.

B \flat Cl.

Vln.

mf

pp

pp \triangleleft \triangleleft

9

Fl.

B \flat Cl.

Vln.

pp \triangleleft *mf*

pp

Detailed description: This system contains measures 9, 10, and 11. The Flute (Fl.) part begins with a melodic line in 4/4 time, marked *pp*, which then moves to 5/4 time in measure 11, marked *mf*. The B-flat Clarinet (B \flat Cl.) part follows a similar rhythmic pattern. The Violin (Vln.) part is mostly silent, with a few notes in measure 10 marked *pp* and measure 11.

12

Fl.

B \flat Cl.

Gtr.

Pno.

Vln.

pp

Detailed description: This system contains measures 12, 13, 14, and 15. The Flute (Fl.) and Violin (Vln.) parts are mostly silent, with a few notes in measure 12. The B-flat Clarinet (B \flat Cl.) part has a melodic line in 5/4 time, then rests in 4/4, 3/4, and 4/4. The Guitar (Gtr.) part is silent. The Piano (Pno.) part has a complex accompaniment in 5/4 time, marked *pp*, then rests in 4/4, 3/4, and 4/4.

15

Fl. *f*

B♭ Cl. *pp*

Gtr. *mf*

Vln. *pp*

18

Fl.

B♭ Cl.

Gtr. *mf*

Vln. *mf*

21

Pno. *pp*

23 *rit.* $\text{♩} = 160$

Fl. *p*

B♭ Cl. *intenso, come declamando un testo in versi*

Gtr. *p*

Pno.

f

*Red. sempre ten.
m.s. 8vb*

26

B♭ Cl.

Pno.

29

B♭ Cl.

Gtr. *f pizz.*

Pno. *mp*

33

B \flat Cl.

Gtr.

Pno.

mp

ppp

(m.d. loco)

f pizz.

36

B \flat Cl.

Gtr.

Pno.

Vln.

mp

ppp

f pizz.

ripetere 2 volte, per un totale di 3 esecuzioni del passo

39

Fl.

B \flat Cl.

Gtr.

Pno.

Vln.

41

Fl.

B \flat Cl.

Gtr.

Pno.

Vln.

44

Fl.

B♭ Cl.

Gtr.

Pno.

Vln.

ppp

mp

47

Fl.

B♭ Cl.

Gtr.

Pno.

Vln.

ppp

50 *lunga*

Fl.

B♭ Cl.

Gtr.

Pno.

Vln.

lunga

lunga

rit.

p

pp

mf

ord.

mf

lunga

pp

loco

ord.

pp

Tempo I

$\bullet = 92$

53

Fl.

B♭ Cl.

Gtr.

Vln.

mf

56

Fl.

B \flat Cl.

Gtr.

Pno.

Vln.

mf

p

pp

p

58

Fl.

B \flat Cl.

Gtr.

Pno.

Vln.

p

p

pp

61

Fl.

B♭ Cl.

Gtr.

Pno.

Vln.

p

pp

mp

pp

pp

Detailed description: This page of a musical score covers measures 61, 62, and 63. The score is for five instruments: Flute (Fl.), B♭ Clarinet (B♭ Cl.), Guitar (Gtr.), Piano (Pno.), and Violin (Vln.). The key signature is three flats (B♭, E♭, A♭) and the time signature is 3/4. Measure 61 features a melodic line in the Flute and B♭ Clarinet, starting with a half note G4 and moving to a dotted quarter note F4. The Flute part has a dynamic marking of *p* and an accent (>). The B♭ Clarinet part has a dynamic marking of *pp* and an accent (>). The Guitar, Piano, and Violin parts are silent in measure 61, indicated by a whole rest. Measure 62 is a whole rest for all instruments. Measure 63 features a melodic line in the Flute and B♭ Clarinet, starting with a half note G4 and moving to a dotted quarter note F4. The Flute part has a dynamic marking of *p*. The B♭ Clarinet part has a dynamic marking of *pp*. The Guitar part has a dynamic marking of *mp*. The Piano part has a dynamic marking of *pp*. The Violin part has a dynamic marking of *pp*.